



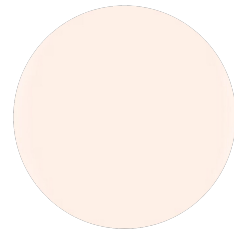
**Honey Glaze**



**Candy Glaze**



**Sugar Glaze**



**Carmel Glaze**



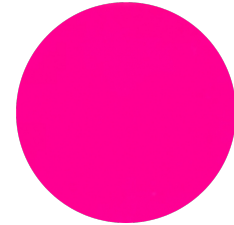
**Moonglow**



**Pearl Drop**



**Jinx Neon Jelly**



**Trip Neon Jelly**

#### Descriptions of our Jellies - transparent nail color

- Honey - neutral tone, fully transparent
- Candy - pink toned, fully transparent
- Sugar - whitish tone. Buildable and semi transparent in 3-coats.
- Carmel - neutral tone. Buildable and semi transparent in 3-coats.
- Moonglow- iridescent color, fully transparent.
- Pearl a drop - shimmering whitish tone with gold mica. Semi transparent.
- Jinx- neon purple with slight shimmer, fully transparent
- Trip- neon pink, fully transparent